



Birchfield Crescent

Abington, Northampton

oriordanbond
SALES & LETTINGS



Birchfield Crescent

Abington
NN3 2TG

PRICE £209,995

O'Riordan Bond is delighted to offer to the market this well presented three bedroom family home located in Abington with close access to local schools and amenities.

Offered for sale with no onward chain, the accommodation comprises entrance porch, extended living/dining room and a 19' fitted kitchen. To the first floor are three bedrooms and a family bathroom with shower over the bath. Outside, to the front of the property is a low maintenance garden with shrubs and low level brick retaining wall. The rear garden has a paved patio, artificial lawn and timber retaining fence. Further benefits include gas radiator heating and uPVC double glazing. (B/811/M)

Additional information

- Council Tax Band: A
- Energy Efficiency Rating: C

Viewing

Viewing strictly by appointment – details below

Disclaimer

O'Riordan Bond Estate Agents Limited has not tested apparatus, equipment, fittings or services and so cannot verify they are in working order. The buyer is advised to obtain verification from their solicitor or surveyor.

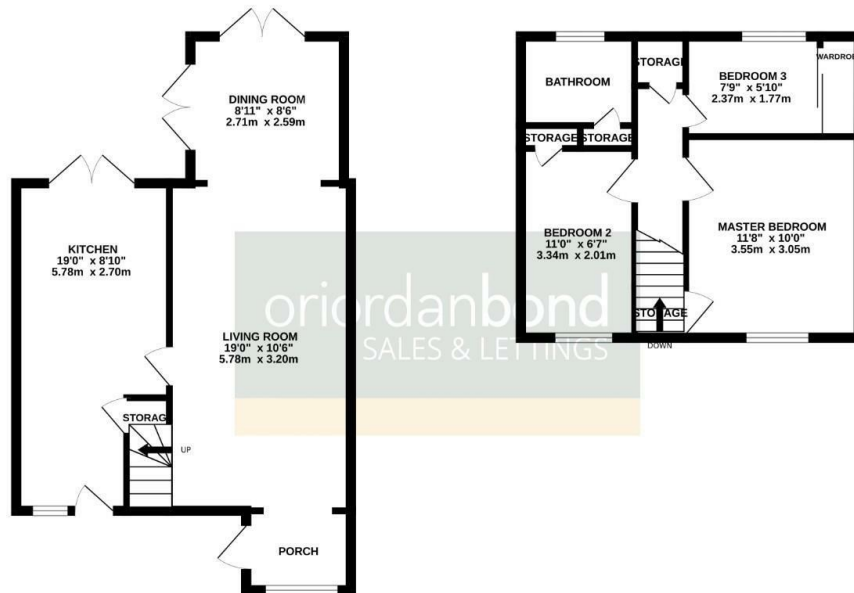
O'Riordan Bond Abington East Sales
01604 639007

abingtoneast@oriordanbond.co.uk



GROUND FLOOR
470 sq.ft. (43.7 sq.m.) approx.

1ST FLOOR
341 sq.ft. (31.7 sq.m.) approx.



TOTAL FLOOR AREA: 811 sq.ft. (75.4 sq.m.) approx.

Whilst every attempt has been made to ensure the accuracy of the 'floorplan' concerned here, measurements of doors, windows, rooms and any other items are approximate and no responsibility is taken for any error, omission or mis-statement. This plan is for illustrative purposes only and should be used as such by any prospective purchaser. The services, systems and appliances shown have not been tested and no guarantee as to their operability or efficiency can be given.

Made with Metagix 02/05